

Automation Systems
Skid Packaged Automation
E&I Service & Maintenance
Wellhead/Process Control Panels
Systems Engineering & Software Configuration

VersaTech
Automation Services



Houston • Dubai • New Orleans

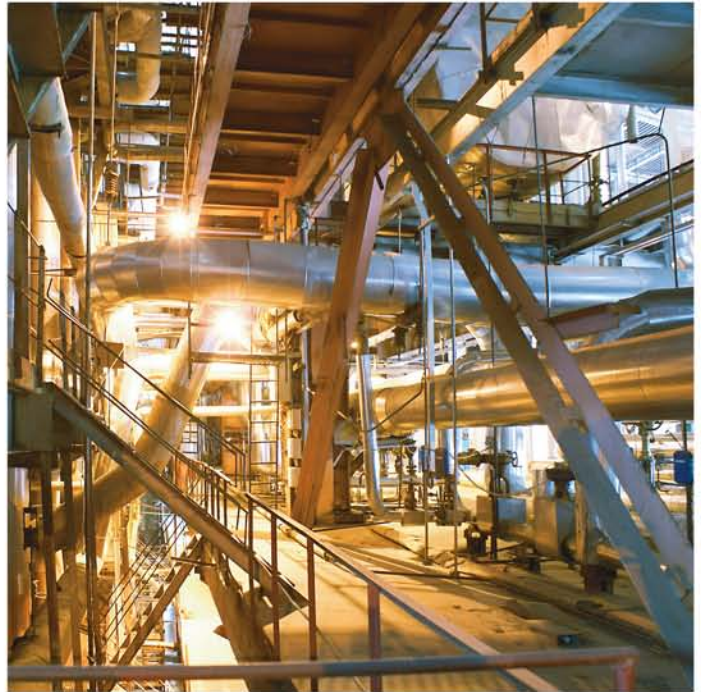


COMPANY HISTORY

VersaTech Automation Services is a company with a business philosophy that is responsive, flexible and focused on the customer.

The management, staff and ownership of VersaTech Automation Services are some of the most experienced and most recognized names working in the industrial automation business today.

This management team combines over 300 man years of experience and can bring instant credibility and know-how to your project.



The extensive experience of the VersaTech staff, coupled with the facilities, capabilities, business philosophy and financial strength of VersaTech's ownership, has created a team with total capabilities unmatched in the industrial automation and controls business.



Responsive, Flexible & Focused on your project.

Accredited to ISO 9001:2008, OHSAS 18001:2007 & ISO 14001:2004



NATURE OF BUSINESS

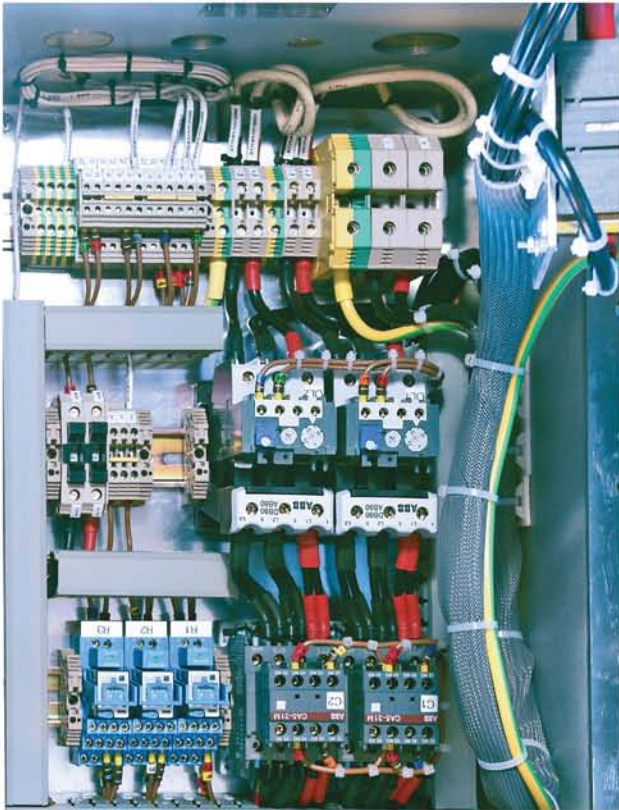
From small PLC's and pneumatic/hydraulic control panels, to large skid-based HPU's and very large chemical injection systems, VersaTech cost effectively meets your control system needs. VersaTech's substantial field service capability ensures comprehensive, onsite installation, commissioning, startup and maintenance of your control system, worldwide.

VersaTech is a member of the Versa Group family of companies (Versabar Inc, Versabuild LLC, Versamarine LLC, Versatruss LLC, Versabuoy International LLC and Yarbrough Cable LLC).



Certification:

Quality Management System
ISO 14001 : 2004
OHSAS 18001 : 2007
ISO 9001 : 2008





AUTOMATION CONTROL SYSTEMS

VersaTech offers the complete range of automation products and services in both the domestic and international markets.

As a company VersaTech is fully compliant and familiar with the widest range of Industrial Control Systems, Applications and Standards.

- Solid state control (PLC, DCS, HMI, TMR, etc.) for Hydrocarbon Process control & safety systems
- Pilot Operated Sub-sea Well Control, pneumatic/hydraulic systems (well head control panels, hydraulic power units, TUTU's, etc.), pump control Systems (Engine & Motor Driven)
- ESD, Fire & Gas Detection Systems.
- Large packaged systems (chemical injection, fluid-mixing , BOP control, etc.).

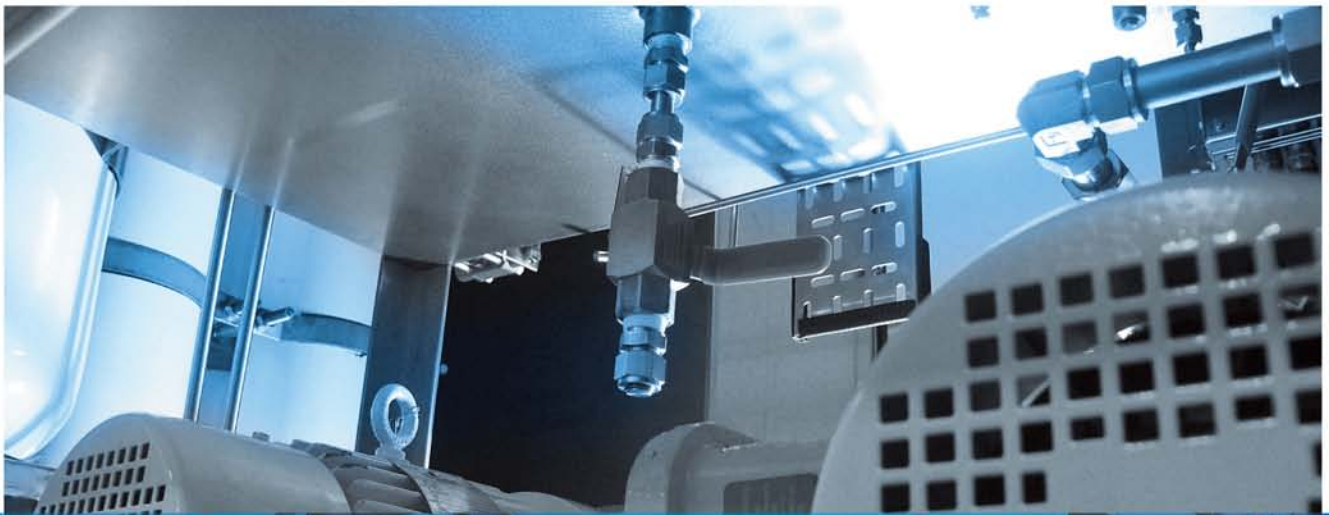


CONTROL SYSTEM DESIGN

Safety & Quality are of paramount significance in the design of any Control System. Functional requirements, performance, statutory and regulatory requirements, reliable operation and maintenance are considered for designing any control system.

Code requirements used are:

- API RP 14B Design, Installation, Repair and Operation of Subsurface Safety Valve Systems
- API RP 14C Analysis, Design, Installation & Testing of Basic Surface Safety Systems on Offshore Production Platforms
- API RP 14 E Design & Installation of Offshore Production Platform Piping Systems
- API RP 14F Recommended Practice for Design & Installation of Electrical Systems for Fixed & Floating Offshore Petroleum Facilities for Unclassified and Class I, Div 1 & 2 Locations
- API 675 Positive Displacement Pumps-Controlled Volume
- ANSI/AWS D1.1 Structural Welding Codes
- ANSI B31.3 Process Piping • NFPA 70 National Electrical Code
- ASME SEC IX Welding and Brazing Qualifications



Immaculate Execution of Projects

Worth Over \$700 million Worldwide



WELLHEAD CONTROL PANELS

A single well panel incorporates pneumatic and hydraulic valve controls for sequential valve operation (opening & closing), emergency shutdown, manual override and safety shutdown. System pressure is generated by air driven or electrically driven pumps and displayed by means of gauges.

Panels are constructed in 316 stainless steel for corrosion resistance (NACE MR-01-75) and designed for ease of operation and access to panel components for maintenance.

Multi Well Control Panels are inherently single well panels, referred to as modules, set together in a Panel to control a number of wells. The Modules can be isolated or removed without disrupting the functionality of other modules of the panel.

Solar powered Control Panels are designed as alternative energy source to meet customer specification to make the panel self contained without the need for external power services or utilities.





CHEMICAL INJECTION SYSTEMS (CIS)

CIS Systems are supplied fully assembled and tested to customer specifications from concept to completion. Chemical Injection Systems are available for various applications:

- Corrosion Inhibitors • Methanol Injection • Scale Inhibitors • Wax Inhibitors • Demulsifiers
- Glycol • Odorization • Pour Point Depression



HYDRAULIC POWER UNITS

Hydraulic power units (HPU) are designed to customer specification from design to final commissioning for the supply of high volume, high pressure continuous hydraulic power. Systems includes stand alone or intergrated hydraulic storage.



HYDRAULIC TEST UNITS

Test units are manufactured to customer requirements of flow & pressure. Pumps are air or electric driven to produce pressure up to 20,000 psi . Flow varies from 1 litre per min up to 10 Gallons per min. The unit is constructed in 316 SS enclosure or frame with control panel for operation.



Unbeatable Technical Expertise
Unique System Capability





INSTALLATION COMMISSIONING MAINTENANCE & INSPECTION SERVICES

VersaTech Offers knowledgeable and safety conscious technicians on your job site right away, when you need installation of your process control or safety system, when you need to modify or maintain your automation system .Versatech is responsive, flexible & focused.

Field Service E&I Capabilities:

- New Construction
- Short & Long Term Maintenance & Inspection Contracts
- Control System Troubleshooting & Field Repair
- Monthly/Quarterly/Annual Testing & Record Keeping
- Field Programming & Software Configuration
- Instrument Calibration & Loop Checks
- Pre-Commissioning & Commissioning
- Operator Training
- Hydraulic Flushing
- Pressure Testing



SPARE PARTS & PARTS SUPPLY

VersaTech maintains spares of critical parts for the components installed on the control systems .Spare parts are stocked to reduce customer downtime and plan maintenance. Option is available fore customer to establish a supply program with VersaTech.

System Accessories

VersaTech provides a comprehensive range of field accessories.

An extensive list of instrumentation and control components is stocked, every part is tested to meet the needs of each individual customer which includes.

- Pressure Switches
- Level switches
- Relays
- Indicators
- Quick exhausts
- Sand Probes
- Hydraulic Controllers
- ESD Stations
- Fusible Plugs
- Vent Screens
- Flowline Pilots
- Filler Tubes
- Fire Safety Valves





VersaTech-Houston
11349 FM 529 Road
Houston,
TX 77041
USA

Main: 713 939-6100
Fax: 713 937-7222

VersaTech-Middle East
P.O. Box 18055
Jebel Ali Free Zone
Dubai
U.A.E.

Main: +971 4 881 1234
Fax: +971 4 881 1236

VersaTech-New Orleans
1111 Engineers Road
Belle Chasse
LA 70037
USA

Main: 504 392-3200
Fax: 504 392-5111

www.vtechas.com